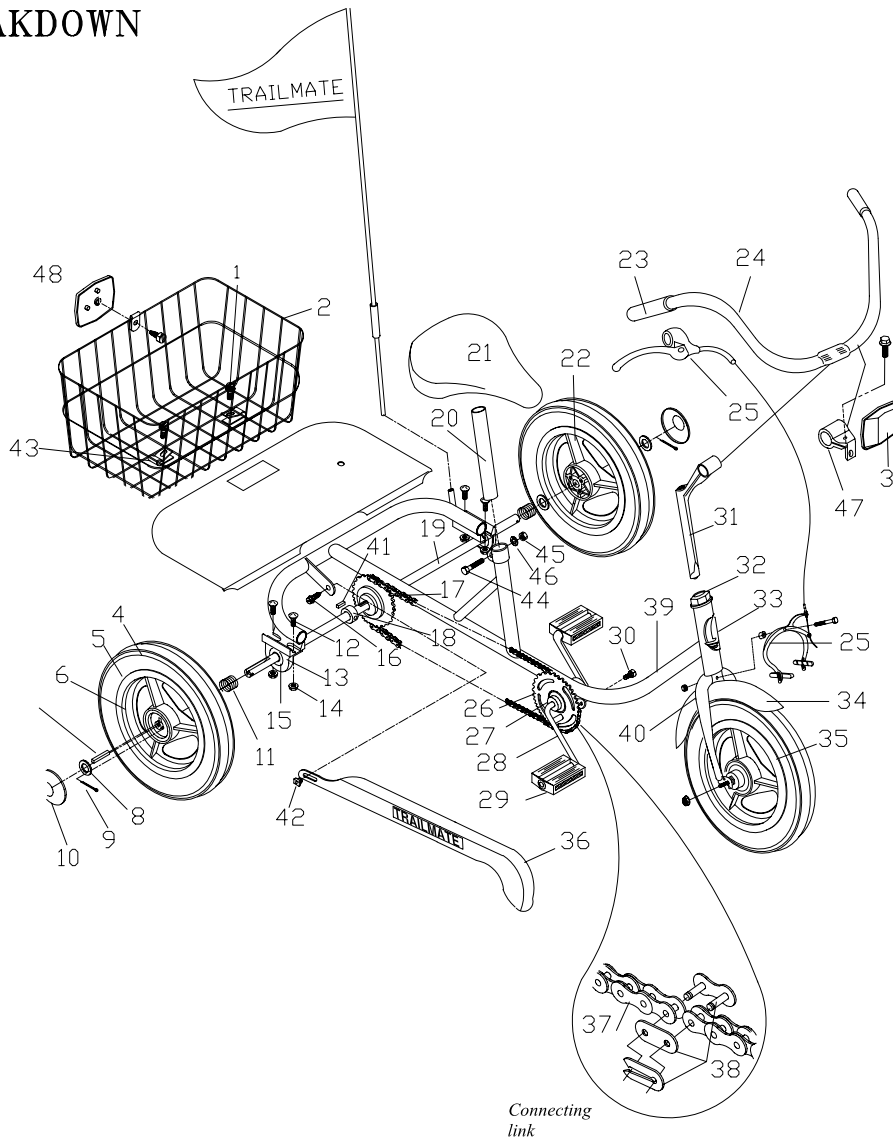




Trailmate

MINI TIKE ILLUSTRATED PARTS BREAKDOWN



8/7/02

ITEM#	PART#	DESCRIPTION	QTY.	ITEM#	PART#	DESCRIPTION	QTY.
1	11120	SCREW 1/4-20 X 3/4 FLANGED HEAD	2	26	19916	SPROCKET 32T MINI TIKE	1
2	19917	BASKET REAR MINI TIKE	1	27	11697	CRANK BEARING SET COMPLETE	1
3	11861	FR CLEAR 40-0122-00 SL 122	1	28	19914	CRANK 3-1/2	1
4	18208	TIRE 12.5 X 2.25 BSW	3	29	19915	PEDAL 1/2" MINI TIKE	1
5	19243	TUBE 12 X 2.125 ANGLE STEM	3	30	12188	SCREW 10X3/8 TYPE B SHH	1
6	19895	WHL 12" MAG REAR KEYED INS	1	31	11813	STEM HANDLEBAR WALD #4	1
7	20012	KEY SQUARE 3/16 X 1-1/4	1	32	11831	HEAD SET COMPLETE	1
8	12240	WASHER SPACER 1X4 1/4 X .062	4	33	11718	DECAL TM HEAD	1
9	11070	PIN COTTER 3/32 X 1	2	34	13994	FENDER 12 FRONT	1
10	19962	WHL CAP BLACK PLASTIC	2	35	19897	WHL 12" MAG FRONT 3/8 AXLE	1
11	12260	SPRING AXLE FANCYCLE/BP	2	36	11708	CHAINGUARD DESOTO/EZ ST COLOR	1
12	12215	SCREW 5/16-18 X 3/4 CARRIAGE	4	37	19918	CHAIN/CL MINI TIKE 87 PITCH	1
13	18449	BEARING HOLDER TOP SHSFT SP	2	38	11679	CHAIN CONNECTING LINK	1
14	12175	NUT 5/16-18 FLANGED	4	39	19909	FRAME MINI TIKE ST COLOR	1
15	11642	BEARING AXLE 5/8 ASF 107E	2	40	19919	FORK 21" MWT CALIPER ST COLOR	1
16	12188	SCREW 10-32 X 3/8 SLTD HWH T/F/S	1	41	12246	KEY SQUARE 3/16 X 5/8	1
17	11952	SPROCKET 22T SOLID W/ ADAPTER	1	42	13198	SCREW GROMMET	1
	11949	FREEWHEEL 22T & ADAPTER ASSY	1	43	12069	BASKET HOLD DOWN	1
18*	12241	SET COLLAR 5/8"	1	44	13225	CLAMP BOLT M8X38MM LG HH	3
19	19908	AXLE MINI TIKE REAR	2	45	13226	CLAMP WASHER M8 FLAT	1
20	12076	SEAT POST 9"	1	46	13227	CLAMP NUT M8 HEX	1
21	19911	SEAT MINI TIKE	1	47	11865	HANDLE BAR BRACKET	1
22	19894	WHL 12" MAG REAR 5/8" BORE	1	48	11862	RR RED 40-0121-01 SL 122	1
23	11801	GRIP BLACK 7/8 #40-0203-00	1	49	18867	FORK WHL RETAINER	1
24	19912	HANDLEBAR MINI TIKE	2	50	12172	NUT 1/4-20 FLANGED	2
25*	11645	BRAKE CALIPER MWT ASSY FRT	1	51	12102	FLAG SAFTY	2
	11654	BRAKE CALIPER LOCK LEVER	1				1

* OPTIONAL PARTS FOR FREEWHEEL KIT MODEL (KIT #20029)

1. Preparation

Remove all parts from the frame and wheel cartons. Check tire air pressure and inflate to 30 psi. Make sure tires are properly seated on rims.

2. Front Wheel

Install front wheel on front fork, center it and tighten secure.

3. Handlebar

Slide the handlebar (24) through the clamp on the stem (31) with the portion containing the long bolt to the rear of handlebar. Install clear reflector. Install the stem into the fork (40) until the line marked on the stem is not visible. Align handlebar to the fork as it faces straight ahead and tighten bolt in stem firmly. DO NOT over tighten, this may damage the fork tube. CAUTION: Check that head set (32) is tight.

DO NOT over tighten, this may damage the fork bearings. Fork assembly should rotate freely. Slide handbrake lever (25) onto right side of handlebar and tighten lightly. Slide hand grips (23) on handlebar until they bottom out. You may wish to use a small amount of soapy water inside the grip to make installation easier. NEVER use oil or other lubrications!

Slide handbrake lever against grip, position for a comfortable grip and secure tightly (optional).

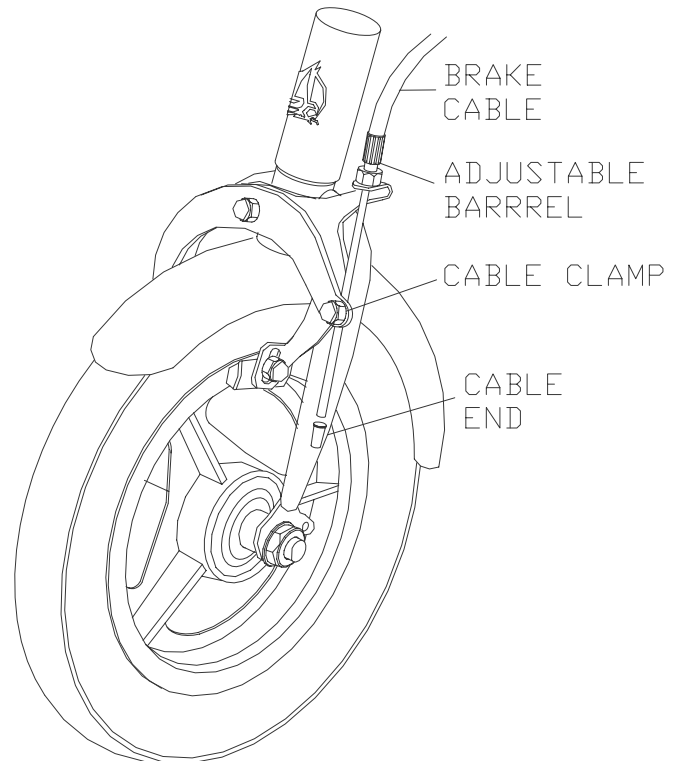
4. Caliper Brake (Optional parts)

The front caliper brake assembly comes attached to the front fork. Unwrap the brake cable and insert the "ball" end into round slot in the brake lever. Place the bezel (silver cap-type piece) on the cable into the hole in the brake base (mounted on the handlebar). Feed the cable through the adjusting barrel on the left side of caliper brake assembly. Thread the brake wire through the cable clamp. Adjust position of brake pads (should line up with the rim). Squeeze the brake pads too the rim and tighten caliper cable clamp. Caliper brake pads should be 1/8" of the wheel rim. Use adjusting barrel if necessary. Install the cable end on the end of the cable and squeeze with the pliers.

5. Final Check

Review the instructions, check connecting bolts and screws for tightness, and readjust the seat and handlebar as necessary.

Place the **Safety Flag** in flag holder on the frame.



REGULAR MAINTENANCE: Bi-Monthly

1. Keep all painted parts cleaned and waxed for a long-lasting luster.
 2. Spray all chrome parts with recommended protective spray coating (LPS-1, WD-40, etc.).
When spraying with protective coatings, it is recommended that you let parts set overnight so the coating will penetrate.
 3. Lubricate the following:
 - a. Pivot points at top and bottom of seat
 - b. Axle shafts
 - c. Inside bearings of both pedals
 - d. Chain – turn pedal crank forward and spray freely
 4. When storing over prolonged periods, turn upside down to prevent flat spots from occurring on the tires. If stored outside, cover to protect finish and moving parts.
-

PREVENTATIVE MAINTENANCE: Every Six Months

These are services that should be performed by your local bicycle shop. A fee may be charged.

1. Check tires for wear, rim cuts, and valve core alignment (usually caused by improper air pressure).
2. Check wheels for cracks and alignment.
3. Check brakes for proper operation.
4. Clean and repack all bearings and adjust all cones.
5. Check for worn bearings, cones, and cups.
6. Check chain for adjustment and clean as needed.
7. Check for loose bolts and nuts.

Attention: While your unit is new, some noises may occur when the unit is breaking in. Should they continue for more than 30 days, see your local bike shop.

INSPECTION

Check the following, as it applies to your cycle, on a regular basis:

1. Coaster brake – Make sure the brake engages, by pedaling backwards.
2. Wheels – Check wheels for alignment.
3. Pedals – Inspect pedal bearings and make sure pedal is tightly attached to crank.
4. Handle grips – Replace worn or loose grips.
5. Chain – Check for proper tightness. Replace damaged chain immediately.
6. Seat – Adjust seat for rider comfort and safety.
7. Tires – Keep tires inflated to the recommended tire pressure, as indicated on the tire's sidewall.
8. Chainguard – Replace damaged or missing chainguard immediately.
9. Frame – Replace damaged frame immediately.



Trailmate

1851 67th AVE. EAST
Sarasota, Fl 34243
Tel:(941) 755-5511
Fax: (941) 758-5141

Visit us @www.trailmate.com

**For service or to order
replacement parts
please contact your
local Trailmate dealer.**

MINI TIKE

This is a recreational unit, not designed for excessive speeds or misuse.

Do not brake or turn at high speeds. This may cause cycle to roll over. Careless operation may cause rider to lose control and result in **serious injury.**

Things to know before riding your cycle:

1. Know your local bicycle laws and wear a helmet.
2. Do not exceed the recommended weight limit of 250 lbs.
3. No more than one rider at one time.
4. Do not stand on unit.
5. Be sure to install safety flags.
6. Wear light-colored clothing and protective gear.
7. Do not ride at night.
8. Children must be supervised by an adult at all times.

Trailmate Limited Warranty

Trailmate, Inc., guarantees each cycle product against all defects in materials and workmanship for a period of 90 days from date of purchase. Tires and tubes are not covered by this guarantee.

During this period, any part that is judged by the makers to be defective will be replaced free of charge. Any failure resulting from accident, abuse, neglect, normal wear, or improper assembly or maintenance by the owner is not covered.

Trailmate, Inc., further authorizes a lifetime frame guarantee and will replace any frame, at no cost to the buyer, providing that item has not been used for rental use and that:

- 1) The item has not been altered, repaired, or modified in any way.
- 2) The item has not been subject to misuse, negligence, and/or an accident.
- 3) Original ownership is established.

Any parts under this guarantee on which claims are entered shall be returned for inspection with transportation charges prepaid by the claimant. Replacement parts will be shipped F.O.B. factory.

There are no warranties or guarantee, expressed or implied, written or oral, which extend beyond the description on the face hereof.