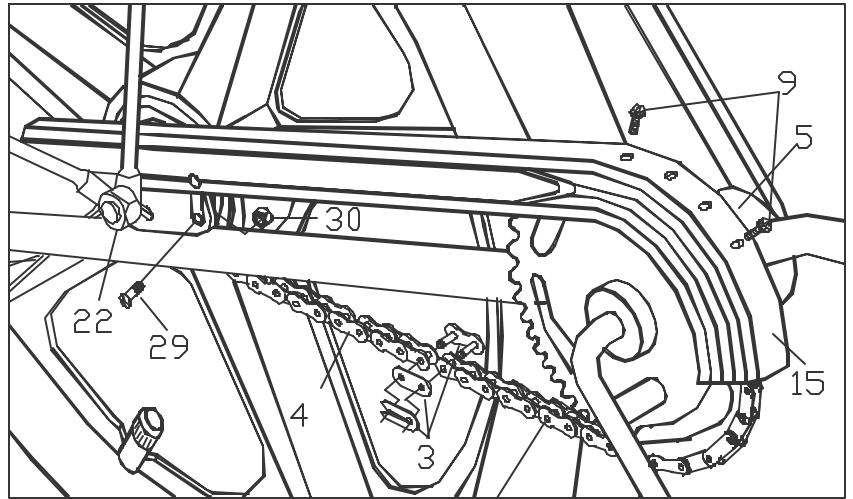


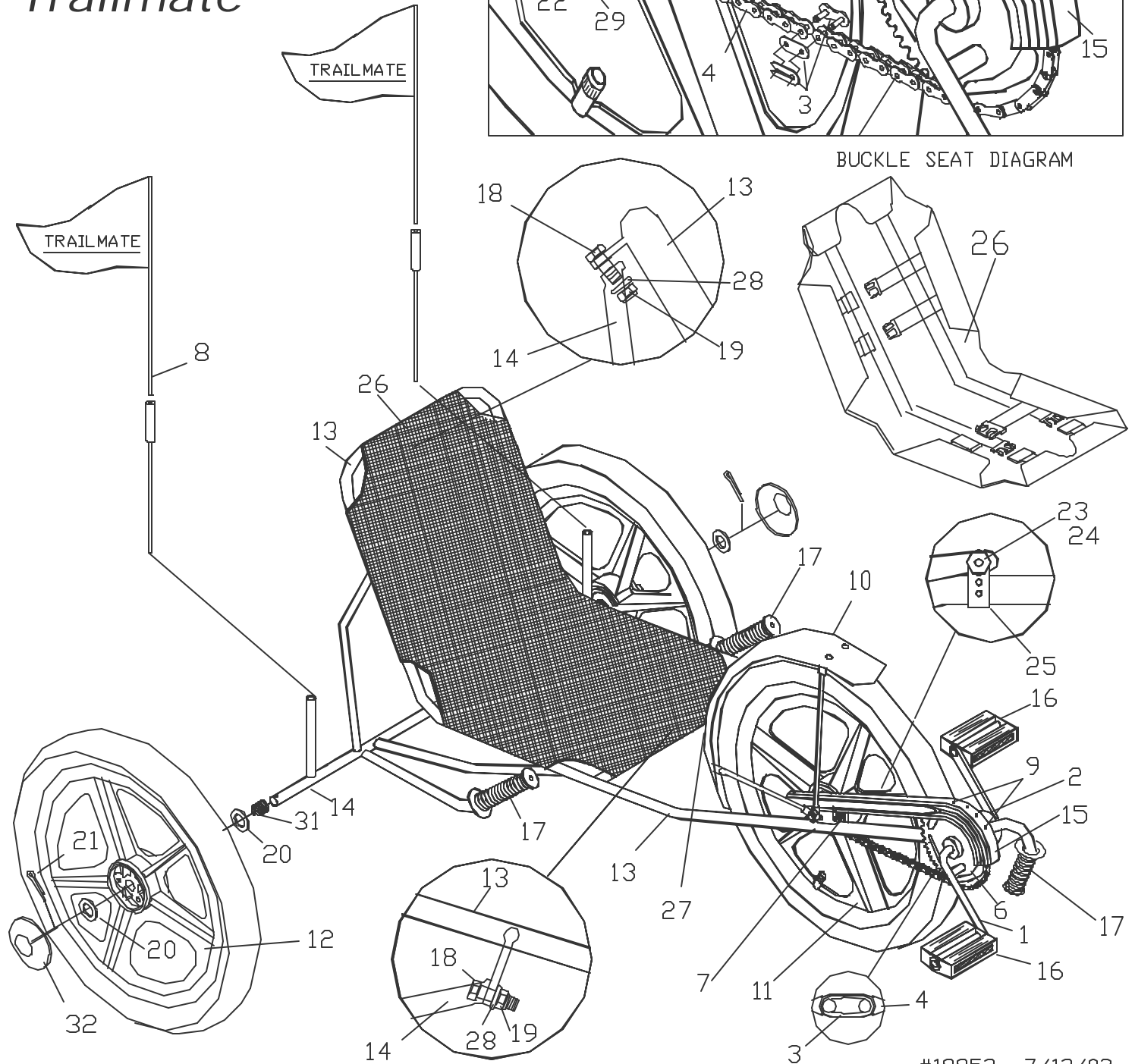


Trailmate

MINI PEEL ILLUSTRATED PARTS BREAKDOWN



BUCKLE SEAT DIAGRAM



#19952 7/12/02

MINI PEEL PART LIST

ITEM NO.	PARTS NO.	DESCRIPTION	QTY.	ITEM NO.	PARTS NO.	DESCRIPTION	QTY.
1	19914	CRANK 3-1/2"	1	17	18175	GRIP HANDLE YLW & BLK	3
2	11697	CRANK SET COMPLETE	1	18	12208	SCREW 5/16-18X3/4 HHCS	2
3	11679	CHAIN CONNECTING LINK	1	19	11065	NUT 5/16-18 NYLON INSERT	2
4	18729	CHAIN/CL M/P 59 PITCH	1	20	12240	WASHER SPACER 1X41/64X.062	4
5	11718	DECAL TM HEAD	1	21	11070	PIN COTTER 3/32X1	2
6	11934	SPROCKET 36T	1	22	19153	NUT CB SHIMANO	4
7	18909	SPROCKET 21T	1	23	19169	SCREW BRAKE STRAP SHIMANO	1
8	12102	FLAG SAFETY W/O BRACKET	2	24	19168	NUT BRAKE STRAP SHIMANO	1
9	12188	SCREW 10-32X3/8 SLTD HWH	2	25	12279	CLAMP BRAKE STRAP SHIMANO	1
10	19947	FENDER 12" M/P ASSY	1	26	19931	SEAT M/P YELLOW	1
11	19953	WHL 12" MAG M/P W/CB & HDW	1	27	19325	DECAL "DO NOT STAND ON CYCLE"	1
12	19894	WHL 12" MAG REAR 5/8" BORE	2	28	12236	WASHER 5/16 SAE	2
13	19942	FRAME M/P FRONT ASSY	1	29	12197	SCREW 1/4-20X1/2	1
14	19943	FRAME M/P REAR ASSY	1	30	12172	NUT 1/4-20 FLANGED	1
15	19948	CHAINGUARD M/P ASSY	1	31	12260	SPRING AXLE FANCYCLE/B/P	2
16	19915	PEDALS MINI TIKE	1	32	19962	WHL CAP BLACK PLASTIC	2

MINI PEEL

ASSEMBLY INSTRUCTION

1. Preparation (AIR PUMP, AIR GAUGE)

Remove all parts from the carton. Do not remove protective wrapping until necessary. Check tire air pressure and inflate to 30 P.S.I. Make sure tires are properly seated on rims.

2. Front and Rear Frame (TWO 1/2" WRENCHS)

Assemble front (13) and rear frame (14) sections together (see illustrated parts breakdown) Insert bolts (18) into tabs on frames sections. Secure with washers (28) and lock nuts (19). Tighten nuts so that the frame sections are securely held together, but not so much to cause binding when pivoted.

3. Rear Wheels (PLIERS)

Slide springs (31) and washers (20) onto ends of rear axle. Slide rear wheels onto rear axle (flat side inside). NOTE: If wheel does not slide freely onto axle, lightly oil and try again. Do not force wheel onto axle; this may damage the hub. Secure with washer (20) and cotter pin (21) (wheel must rotate freely). Install wheel caps (32). Push on the center of cap to lock.

4. Pedals (5/8" or 14mm WRENCH)

Install pedals (16) by threading the pedal marked "R" into the right side of the crank (clockwise) and the pedal marked "L" into the left side of the crank (counterclockwise). Tighten securely.

5. Seat and Seat Adjustment

Place seat (26) on back rest, with the wide flap at top. Install flaps around front frame and buckle from top to bottom and side to side (see parts breakdown). Have the rider sit in the seat, adjust tension until comfortable.

6. Final Check

Complete by installing safety flags (8) in the holders. Check frame connections and readjust the seat as necessary.