

TRAILMATE METEOR ASSEMBLY MANUAL

(DISC BRAKE VERSION)



The Trailmate Meteor recumbent has been designed for easy assembly. This means more time to enjoy the smooth ride with single speed, 3 speed coaster brake and 21 speed models available.

METEOR PARTS LIST

<u>Dwg #</u>	<u>Item #</u>	<u>Description</u>	<u>Qty</u>
1	19720	NUT 5/8 - 18 NYLON INSERT	2
2	12240	WASHER SPACER 1X41/64X.062	2
3	11863	REFLECTOR WHL CLR	3
4	20361	SEAT SUPPORT STRUT BOTTOM	2
5	20324	PIN HITCH BLACK	1
6	20325	SEAT SUPPORT STRUT TOP	2
7	20326	BACK REST FRAME RECUMBENT	1
8	12102	FLAG SAFETY W/POLE W/O BRKT	1
9	18522	CLAMP QUICKRELEASE ADJUSTMENT	2
10	11643	BEARING AXLE,5/8" ID	4
11	11957	TIRE 20X1.75 BSW- W/TUBE	2
12	20327	DERAILLEUR REAR 7SPD TX-35	1
13	12005	WHL 20X1.75X.080 TRK REAR ALLO	2
14	20329	FREEWHEEL14-28T 7SP	1
15	19706	KIT 3SPCB INDUST/RECUMB	1
16	20331	DISC SS 160MM OD	1
17	12246	KEY SQUARE 3/16X5/8	3
18	12241	SET COLLAR 5/8"	2
19	11952	SPROCKET 22T SOLID W/ADAPTER	1
20	20328	CHAIN GUIDE TENSIONER ASSY	1
21	20360	PEDALS 9/16 PAIR	1
22	20334	CRANK BEARING SET BLK	1
23	13227	CLMP NUT M8 HEX	2
24	20335	SEAT SLIDE	1
25	20336	FRAME REAR RECUMBENT	1
26	20337	BRAKE LOCKING LEVER RIGHT (INCL CABLE)	1
27	20338	DISC BRAKE CALIPER (METEOR)	1
28	20339	STEM 2 BOLT W/ 1" CLAMP	1
29	20340	HEAD SET, COMPLETE, METEOR	1
30	20341	HANDLEBAR METEOR	1
31	20342	SEAT NYLON MESH METEOR	1
32	20343	SHIFT LEVER LEFT MRX	1
33	20344	DERAILLEUR FRONT	1
34	20345	BRAKE LOCKING LEVER LEFT (INCL CABLE)	1
35	20346	FENDER 16" FRONT METEOR	1
36	20347	V BRAKE ASSY	1
37	20348	FENDER BRACE 16" METEOR	2
38	11959	TIRE 16X1.75 BSW W/TUBE	1
39	20372	WHL 16 X 1.75 FRT ALLOY	1
40	11865	BRACKET FRT REFLECT	1
41	11801	GRIP BLACK DC 7/8	2
42	11718	DECAL TM HEAD	1
43	20292	KIT AXLE DES/REG/LR/METEOR	2
44	20350	CHAIN FRONT 174L 21 SPD METEOR	1
45	20351	HUB MIDDLE 7SPD BLACK METEOR	1
46	11861	REFLECTOR CLEAR FRONT	1
47	20352	CHAIN REAR 50L METEOR	1
48	11862	REFLECTOR RED REAR	1
49	11894	SEAT WESTERN SADDLE	1
50	20332	SHIFT LEVER RIGHT MRX (REAR)	1
51	20353	CHAIN WHEEL FRT TRIPLE SET INCL ARMS	1
52	20354	CHAIN RING FRONT (1SPD,3SPCB)	1
53	20042	SCREW 3/8-16 X 2 3/4 HHCS	1
54	20358	FORK RECUMBENT FRONT	1
55	20359	FRAME RECUMBENT FRONT	1
56	12212	SCREW 5/16-18X1-1/2 HHCS GR 5	1

Assembly

1. Remove all parts from the box and carefully unwrap all parts. Leave the tape on the axles so that the keys are not lost.



Tool required: 8" crescent wrench, 1/2" and 9/16" socket wrench, Allen wrenches, rubber mallet, pliers, Phillips screwdriver, air pump.

2. Frame Assembly

Loosen the four bolts and remove the Allen screw on the rear of the main frame. Slide in the rear frame and align the holes with the slots and holes. Be sure that the shoulders of the bolts seat into the slots. Install the nylon locknuts; **Do not tighten at this time.**



3. Wheels and Front Fender

Attach the front fender to the front fork with the bracket on the back of the fork and the brace attached to the fork at the threaded hole. It may be necessary to loosen the brake shoes and then align them to the rim for proper contact.



Front fender bracket



Front wheel with fender

Remove nylon locknut from rear axle and slide rear wheels onto the shaft aligning the key square with the slot on the hub.



Rear wheel with locknut



Front Brake shoe aligned

4. Pedals

Install the pedals into the crank using a 9/16" open-end wrench to tighten. Note: left hand and right hand thread.



5. Chain

Install the rear drive sprocket on the left rear axle. Install the rear drive chain and join together with the connecting link. Install the connecting link and spring clip using pliers. Slide the frame sections apart evenly until the chain is tight (approximately 1/4" total up and down movement is permissible) and securely tighten all the rear frame bolts and the upper Allen screw in the center. Rotate the pedal several times to check that the chain is running freely.



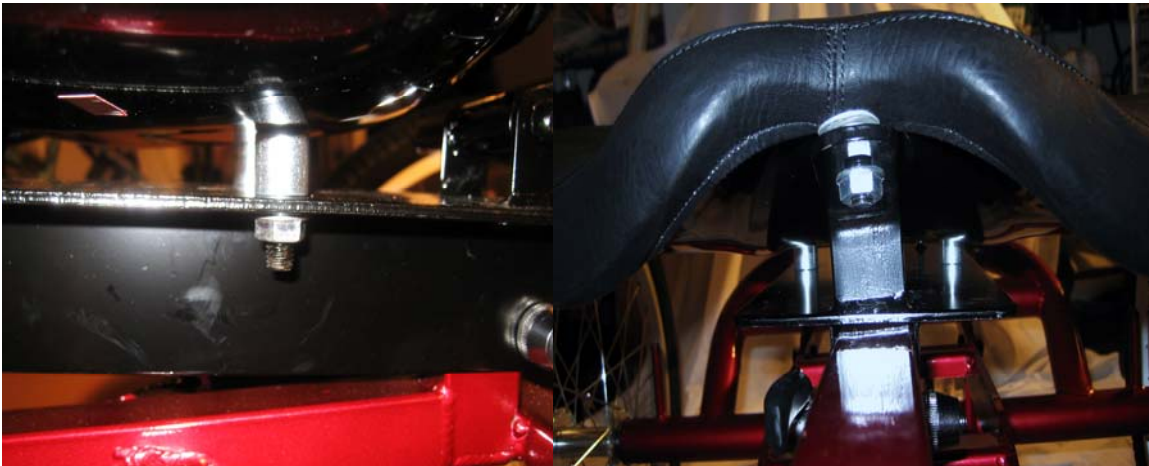
Keep fingers clear! If binding move rear sprocket to correct.

6. Handlebar

Loosen the Allen screws on the stem and clamp the handle bars in place with the portion containing the long bolt to the rear of the handlebar. Install the stem into the fork until the line marked on the stem is not visible. Align handlebar to the fork as it faces straight ahead and tighten bolt in stem firmly. **Do not** over tighten; this can damage the fork. Position the brake handles and tighten using an Allen wrench. Attach front clear reflector.

7. Western saddle Seat

To install the western saddle seat, remove the flanged nuts and place the seat so that it fits to the sliding seat plate. Ensure that the aluminum spacers are in place then tighten three nuts.



8. Back Rest Frame and Seat

Attach main frame to the center bracket using Allen wrenches. Attach the adjustable braces to the rear bracket on the main frame and also to the back rest frame. Tighten bolts while ensuring that the frame can slide while the saddle seat is slid back and forth.



Center support for back rest

Vertical braces attached

Slide the rear seat cover onto the frame. Insert the top corners into the pockets and drape down. Insert nylon straps into the buckles and snap in top to bottom. Turn bottom corners inside out to fit lower frame snugly. Adjust tension for comfort and fit.

Complete assembly by inspecting all fasteners, collars and chains for tightness and inserting safety flag into the holder. Pump tires to the proper pressure. Adjust handlebar and seat as necessary.

REGULAR MAINTENANCE: Bi-Monthly

1. Keep all painted parts cleaned and waxed for a long-lasting luster.
 2. Spray all chrome parts with recommended protective spray coating (LPS-1, WD-40, etc.).
When spraying with protective coatings, it is recommended that you let parts set overnight so the coating will penetrate.
 3. Lubricate the following:
 - a. Pivot points at top and bottom of seat
 - b. Axle shafts
 - c. Inside bearings of both pedals
 - d. Chain – turn pedal crank forward and spray freely
 4. When storing over prolonged periods, turn upside down to prevent flat spots from occurring on the tires. If stored outside, cover to protect finish and moving parts.
-

PREVENTATIVE MAINTENANCE: Every Six Months

These are services that should be performed by your local bicycle shop. A fee may be charged.

1. Check tires for wear, rim cuts, and valve core alignment (usually caused by improper air pressure).
 2. Check wheels for cracks and alignment.
 3. Check brakes for proper operation.
 4. Clean and repack all bearings and adjust all cones.
 5. Check for worn bearings, cones, and cups.
 6. Check chain for adjustment and clean as needed.
 7. Check for loose bolts and nuts.
-

INSPECTION

Check the following, as it applies to your cycle, on a regular basis:

1. Coaster brake – Make sure the brake engages, by pedaling backwards.
 2. Wheels – Check wheels for alignment.
 3. Pedals – Inspect pedal bearings and make sure pedal is tightly attached to crank.
 4. Handle grips – Replace worn or loose grips.
 5. Chain – Check for proper tightness. Replace damaged chain immediately.
 6. Seat – Adjust seat for rider comfort and safety.
 7. Tires – Keep tires inflated to the recommended tire pressure, as indicated on the tire's sidewall.
 8. Chainguard – Replace damaged or missing chainguard immediately.
 9. Frame – Replace damaged frame immediately.
-



Trailmate

1851 67th AVE East

Sarasota, FL 34243

Tel: (941) 755-5511

Fax: (941) 758-5141

Visit us @ www.trailmate.com

**For service or to order
replacement parts
please contact your
local Trailmate dealer.**

METEOR

This is a recreational unit, not designed for excessive speeds or misuse.

Do not brake or turn at high speeds. This may cause cycle to roll over. Careless operation may cause rider to lose control and result in **serious injury**.

Things to know before riding your cycle:

1. Know your local bicycle laws and wear a helmet.
2. Do not exceed the recommended weight limit of 350 lbs.
3. No more than one rider at one time.
4. Do not stand on unit.
5. Be sure to install safety flags.
6. Wear light-colored clothing and protective gear.
7. Do not ride at night.
8. Children must be supervised by an adult at all times.

Trailmate Limited Warranty

Trailmate, Inc., guarantees each cycle product against all defects in materials and workmanship for a period of 90 days from date of purchase. Tires and tubes are not covered by this guarantee.

During this period, any part that is judged by the makers to be defective will be replaced free of charge. Any failure resulting from accident, abuse, neglect, normal wear, or improper assembly or maintenance by the owner is not covered.

Trailmate, Inc., further authorizes a lifetime frame guarantee and will replace any frame, at no cost to the buyer, providing that item has not been used for rental use and that:

- 1) The item has not been altered, repaired, or modified in any way.
- 2) The item has not been subject to misuse, negligence, and/or an accident.
- 3) Original ownership is established.

Any parts under this guarantee on which claims are entered shall be returned for inspection with transportation charges prepaid by the claimant. Replacement parts will be shipped F.O.B. factory.

There are no warranties or guarantee, expressed or implied, written or oral, which extend beyond the description on the face hereof.